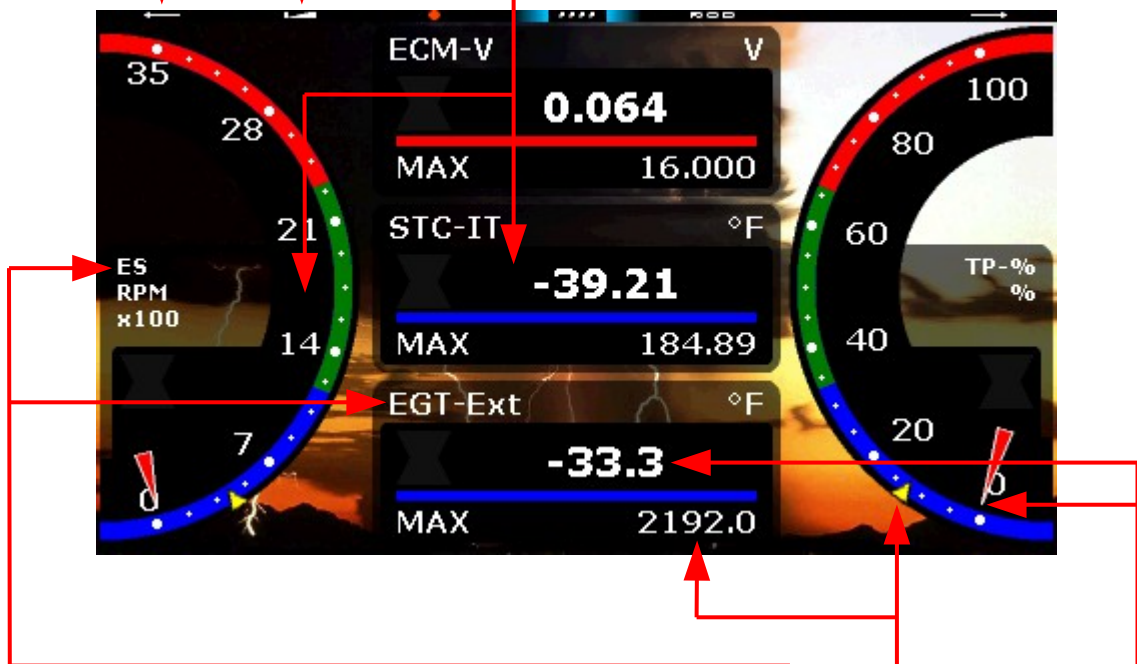


## 1 User interface

### 1.1.1 Dashboard

Touch here to:

- Next dashboard
- Power on demand
- Main menu
- Configure parameter
- Data logging start/stop
- Max values reset
- Previous dashboard



ECM Parameter:

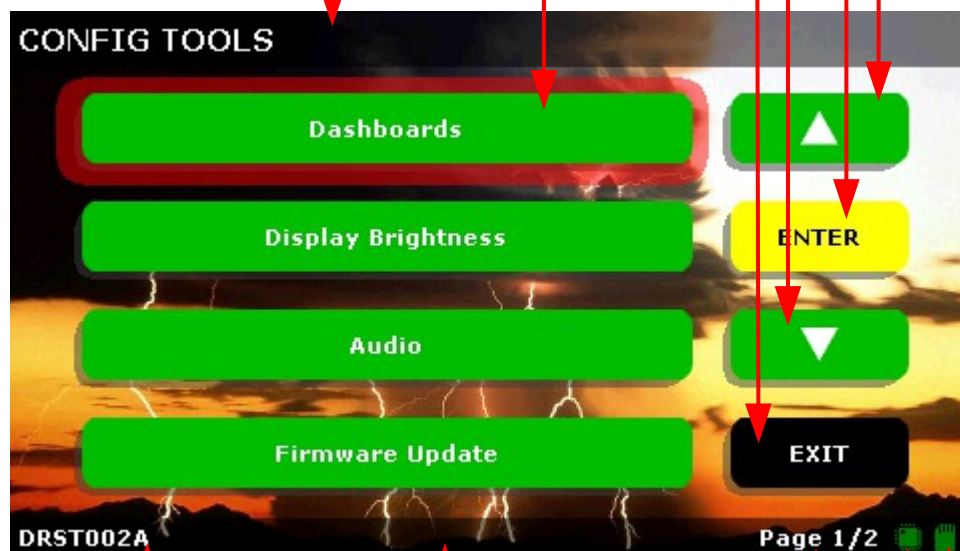
- Short name, measurement unit and multiplier
- Maximum value reached
- Actual value

## 1.1.2 List menu

Touch here to:

- Select previous item
- Enter the selected item
- Select next item
- Exit
- Directly enter the selected item

Title bar



Data version/Notes

Status bar

Number of actual and total pages

ECM communication status:

- Red = no communication
- Yellow = partial communication
- Green = complete communication

SD card status:

- Red = not present or faulty
- Yellow = check in progress
- Blue = check in pause
- White = not readable
- Green = ready